



الموازن لفحص التربة Al Mawazeen Soil Testing

الدراسات البحرية و البرية للتربة
و فحوصات مواد البناء

Onshore / Offshore Soil Investigation
and Construction Materials Testing



We are just a call away !!
+971 4 2583 533



- * **Geotechnical Investigation & Construction Material Testing.**
- * **Microbiological Testing**
- * **Environmental Studies**
- * **Geophysical Surveys (Onshore / Offshore)**
- * **Hydrographic Surveys**
- * **Marine Cargo Surveys**
- * **Structural & Steel Testing**
- * **Topographic Survey**
- * **GIS Services**
- * **NDT Surveys**



Message from the CEO

With utmost commitment to quality and in order to maintain high customer satisfaction and employee satisfaction, we set forth to create the success story of Al Mawazeen Soil & Material Testing Laboratory (AML).

In less than twenty-five years we grew from a handful of committed colleagues in one location, to over fifty staff working in the Middle East. We went from providing a small scope of tests to covering a wide variety of Testing services. We are able to do all of this because of the support of our customers and the loyalty of our people.

We fully realize that our growth and security are dependent upon the success and satisfaction of our customers. Our vision is to be the leader in our fields of activities in the markets in which we operate.

This does not necessarily mean the biggest; however, it certainly means the best. We shall continue to provide quality specialized engineering services that meet our customer's expectations. We are confident of the future and based on our successes we will continue to expand in a healthy way, maintaining the satisfaction of our loyal clients, customers and colleagues. We shall continue to contribute to the well-being of the society and to the preservation of the environment, and we shall serve the construction sector in the best professional manner. We are partners for quality construction.

CEO/Owner

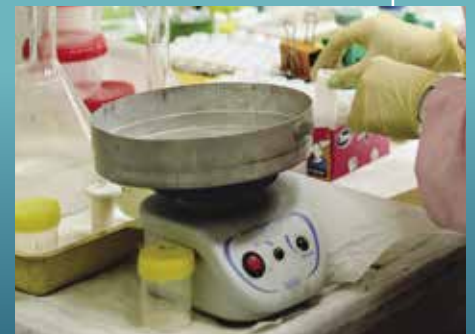
Vision

Al Mawazeen Lab's (AML) vision and core values help to define the culture of our group of companies, motivating our staff to give their best and improving in our client's confidence that we will deliver solutions of highest quality.

Our vision is to be leader in the fields of activities in our markets of operation.

Mission

Our mission is to provide reliable, timely, accurate, cost effective and quality specialized engineering services that meet customer's expectations.



Al-Mawazeen Lab

Al-Mawazeen Soil Testing Labs was established in 1994 in the UAE and at present it is one of the leading organizations in the field of Geotechnical Services with a fully developed Material Testing Laboratory services as well as Land, Marine, GIS, Geophysical Surveys etc. The Lab is providing specialist engineering and land survey services to a wide range of infrastructure, construction and development projects in UAE and abroad.

The uniqueness of the Lab is its dedicated team which consist of highly qualified and experienced staff ready to serve its clients in an efficient and professional way. Company's operations are carried out through its various operating sections. A supervisory staff specialist, with many years of experience in the relevant discipline, heads each of the operating Section.

Al Mawazeen Soil Testing Lab uses latest equipment in the field and most cost-effective technologies in the office to provide our clients with the cost-effective solutions in the region.

Initially in 1994, the company started work as an onshore & offshore, Oil and Gas Field Services and Engineering surveying Services etc. Later it enhanced its expertise and skills in the field of Geophysical & Geotechnical Investigation works and established its own material testing laboratory. The company successfully completed various projects for its clients in all over Middle East and Africa. Every project, regardless of the size, accomplished with expertise, technology and equipment required to meet the relevant standards and client's needs.



Onshore/Offshore Soil Investigation & Material Testing

Geotechnical department of Al Mawazeen Soil Testing is using modern technology in Onshore / Offshore Drilling, Soil-Rock sampling, and field-testing equipment designed for all type of geotechnical investigation purpose. Al Mawazeen Soil Testing has latest field and laboratory testing equipment. Equipment for environmental testing, Geophysical studies as well as mixers and pumps for grouting purposes are also available. Laboratory Test: Soil, Rock, Aggregate, Concrete, Chemical & Environmental Testing, Special Testing, Microbiological testing, PC Strand & Steel testing.



Various laboratory tests performed at Al Mawazeen laboratory are listed below

Soil, Rock, Aggregates & Steel

- Particle Size Distribution ● Atterberg ● Bulk & Dry Density ● Proctor
- California Bearing Test (CBR) ● Shear Strength ● Unconfined compressive strength
- Point Load ● Chemical Analysis ● Water Absorption ● Particles Finer Than 75 µm
- Flakiness and Elongation Index ● Moisture Content ● Aggregate Crushing Value ● Aggregate Impact Value ● Soundness ● Los Angeles Abrasion ● Sand Equivalent ● Hydrometer ● Soil Suitability ● Tensile, Bend & Rebend, ● PC Strand Testing

Concrete

Various Tests performed on concrete are

- Compressive Strength & Density of Cubes and Cylinders ● Water Absorption ● Water Impermeability ● Initial Surface Absorption ● Rapid Chloride Permeability ● Chemical Analysis ● Flexural Strength / Modulus of rupture on concrete beams ● Core Testing ● Fresh Concrete Testing

Environment

Environmental & Contamination

- Soil Test - Heavy Metals, TPH, PAHS, VOC ● Ground Water - Test Heavy Metals, TPH, PAHS, VOC, BOD, COD, BETEXN, Fecal Coliform & Salinity



Microbiological Testing

Water Testing

- Microbiological and Legionella analysis (Tank, Tap, Pools & Jacuzzi, Water filters, Dental & Dialysis units, Waste water, Lake Water, Irrigation water, TSE water)
- Identification of Biological substance (Algae, Giardia, Helminth eggs, Water-borne parasites)
- Microbiological contaminants & Toxins study
- Water Pathogens & Indicator organisms (Salmonella sp., Clostridium sp., E. coli & Others)

Food & Feed Testing

- Food processing unit - Validation & Control studies
- Food Pathogens, Indicator & Spoilage organisms
- Pathogens and Spoilage - Challenge studies
- Spoilage Investigations
- HALAL testing, Allergens & Mycotoxins

Environmental Testing

- Effective Environmental Monitoring Program (EMP)
- Swab & Tape analysis - Personal & Hygiene
- Indoor Air-Quality analysis

Specialty Testing

- Shelf-life testing (ASLT & Real-Time studies) - Foods & Packaging materials
- Stability & Challenge studies - Cosmetics & Personal care products
- Sterility & Bio-Burden Testing - Medical Products (external use only)
- Fungi & Mold Identification analysis- Walls, Ducts & Solid Surface
- Microbial resistance to Paint & Construction materials
- Anti-Microbial & Disinfectant Efficacy testing
- Nitrifying and Denitrifying Bacteria, Sulphate reducing (SRB) & Iron reducing bacteria (IRB)



Hydrographic & Marine Survey Services

Al Mawazeen Soil Testing Laboratory provides vast range of services in marine surveys which includes hydrographic and marine geophysical surveys, oceanographic investigation, diving and coastal engineering services. We also provide highly proficient services with advanced methodology, proven technology and highly experienced personnel. Various types of hydrographic survey carried out at Al Mawazeen are listed below.

Bathymetry

- Depth measurements
- Volume estimation
- Dredging monitoring surveys

Sonar Imaging

- Cable and pipeline route identification
- Fallen objects/debris and lost anchor recovery
- Seafloor imaging
- Seabed sediment distribution

Sub-bottom: Profiling

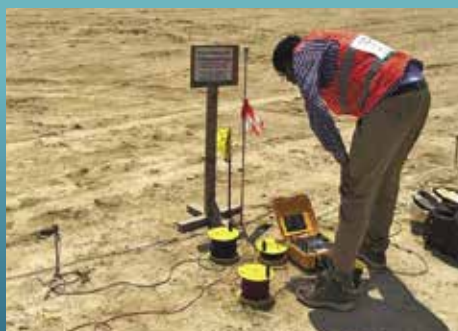
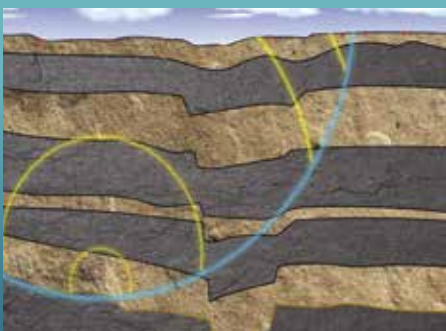
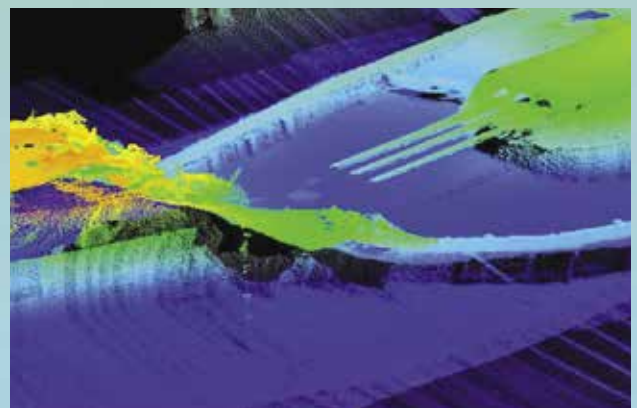
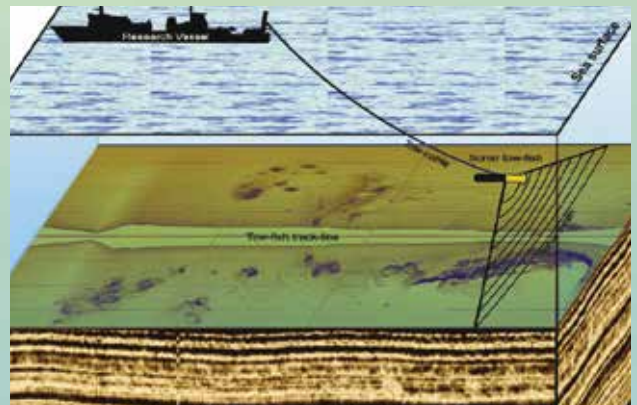
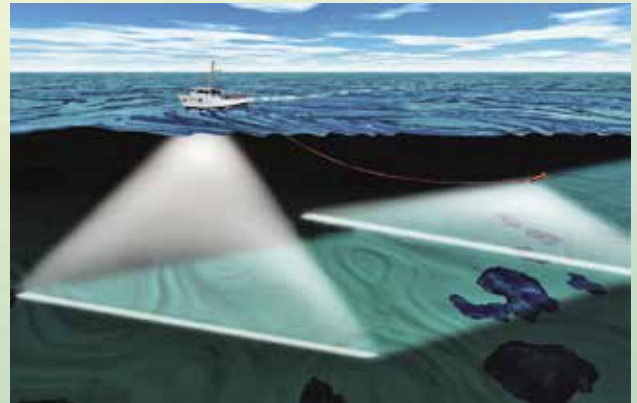
- Delineation of sediment layers
- Buried pipeline objects
- Subsurface geology

Oceanographic Surveying

- Ocean current measurements
- Tide measurements
- Wave measurements
- Physical and chemical parameters of sea water
- Site Assessment

Underwater services

- Diving inspection
- ROV
- Underwater Photography Videography
- Coastal Engineering consultancy services
- Designing of intake and outfall pipeline
- Shoreline monitoring
- Construction of coastal structures like Jetty, Groins, Sheet Piling, etc.



Geophysical Survey Services

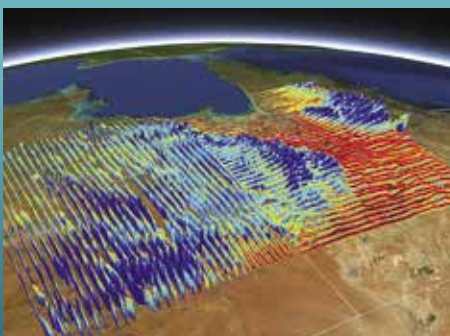
- Multichannel Analysis of Surface Waves (MASW)
- Geophysical Electrical Resistivity Tomography (ERT)
- Seismic Refraction Surveys
- Seismic Data Processing
- Geophysical Cross Hole Seismic Survey
- Geophysical Down Hole Seismic Survey
- Ground Penetration Radar (GPR)
- Geophysical Electromagnetic Induction Survey (EM)
- Geophysical Ground Magnetic Gradient (GMG -2D) Survey
- Geophysical Gravity Survey



Land Survey / GIS

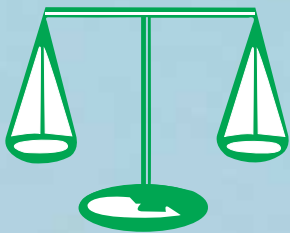
Al Mawazeen Soil Testing's Land Survey Department is engaged in this field for the last Twenty Five years and in this period of time the department rendered high quality services. Land Survey department is equipped with well educated & experienced technical staff using latest technology and equipment and is providing the following services.

- Land Surveying & Leveling
- All type of Topographic Surveys
- Corridor Alignments (Horizontal / Vertical) & Profile
- Cadastral Surveys
- Demarcation services
- Setting out Survey
- Gate level computation services
- Digital Terrain Modeling
- Settlement Monitoring · Earthworks Volumes
- Underground Utilities Survey
- As built survey
- Establishment of Control Station & Bench Marks
- Precise & Differential Leveling
- Survey Consultancy and Check Engineering
- Hiring of Survey Crews
- Aerial Control Mapping
- Laser / 3D Scanning



Special Material Testing Services

- Water Proofing Membranes
- Protection Boards / Soft Boards / Filler Boards / Gypsum Boards
- Rubber / Plastic Materials
- Fabrics / Leather
- Wires
- GRC / GRP / PVC / PU materials
- Textiles / Geo-textile / Paper materials
- Epoxies
- Belts / Ropes e.g. tensile / loading capacity etc.
- Polystyrene
- Structural timber e.g. tensile, static bending, compression etc.
- Adhesives - peel-off tests.
- Coefficient of Surface frictions.
- Steel Nails
- Safety Helmet / Safety Shoes tests.
- Safety Glass Test / Punch Test.
- Wood Test



الموازين لفحص التربة Al Mawazeen Soil Testing

الدراسات البحرية و البرية للتربة
و فحوصات مواد البناء

Onshore / Offshore Soil Investigation
and Construction Materials Testing

Tel. : +971 4 2583 533, Fax : +97 1 4 2583 534 P.O.Box : 48595 , Dubai - U.A.E.
Website : www.almawazeenlab.com E-mail : mawazeen@eim.ae

ISO - 17025 Accredited Lab